

**DIMENSIONS (  $\frac{mm}{inch}$  )**

SIZE	d	E	F	H	M	W	G	T	P	Torque(kg-cm)
1/2	15	26.4	12.5	63	145	M6	M12	9	50	125
	0.59	1.04	0.49	2.48	5.71			0.35	1.97	
3/4	20	31	13.5	74	165	M6	M14	11	50	205
	0.79	1.22	0.53	2.91	6.50			0.43	1.97	
1	25	39.3	15.5	89	195	M8	M14	11	70	305
	0.98	1.55	0.61	3.50	7.68			0.43	2.76	
1.1/4	31.8	48.4	18.6	105	250	M8	M18	14	70	610
	1.25	1.91	0.73	4.13	9.84			0.55	2.76	
1.1/2	38	50	18.3	114	250	M10	M18	14	102	815
	1.50	1.97	0.72	4.49	9.84			0.55	4.02	
2	50.8	51.9	18.4	133	310	M10	M22	17	102	1100
	2.00	2.04	0.72	5.24	12.20			0.67	4.02	

L - PORT 90° TURN

T - PORT 90° TURN

**DIMENSIONS (inch) DIMENSIONS (inch)**

A150	
SIZE	L
1/2	5.98
3/4	6.57
1	7.28
1.1/4	7.91
1.1/2	8.66
2	9.96

A300	
SIZE	L
1/2	6.38
3/4	6.57
1	7.28
1.1/4	7.91
1.1/2	8.66
2	9.96

**DIMENSIONS (mm)**

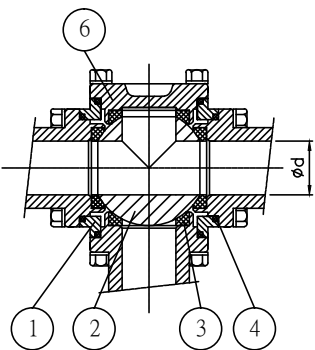
PN16	
SIZE	L
1/2	159.9
3/4	177
1	191
1.1/4	209
1.1/2	234
2	273

**DIMENSIONS (mm)**

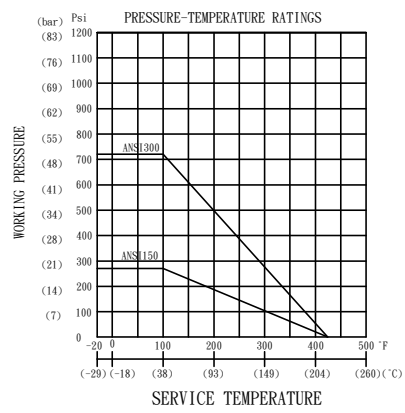
PN40	
SIZE	L
1/2	159.9
3/4	177
1	191
1.1/4	209
1.1/2	234
2	273

SIZE: 1/2", 3/4", 1", 1.1/4"

SIZE: 1. 1/2" , 2"

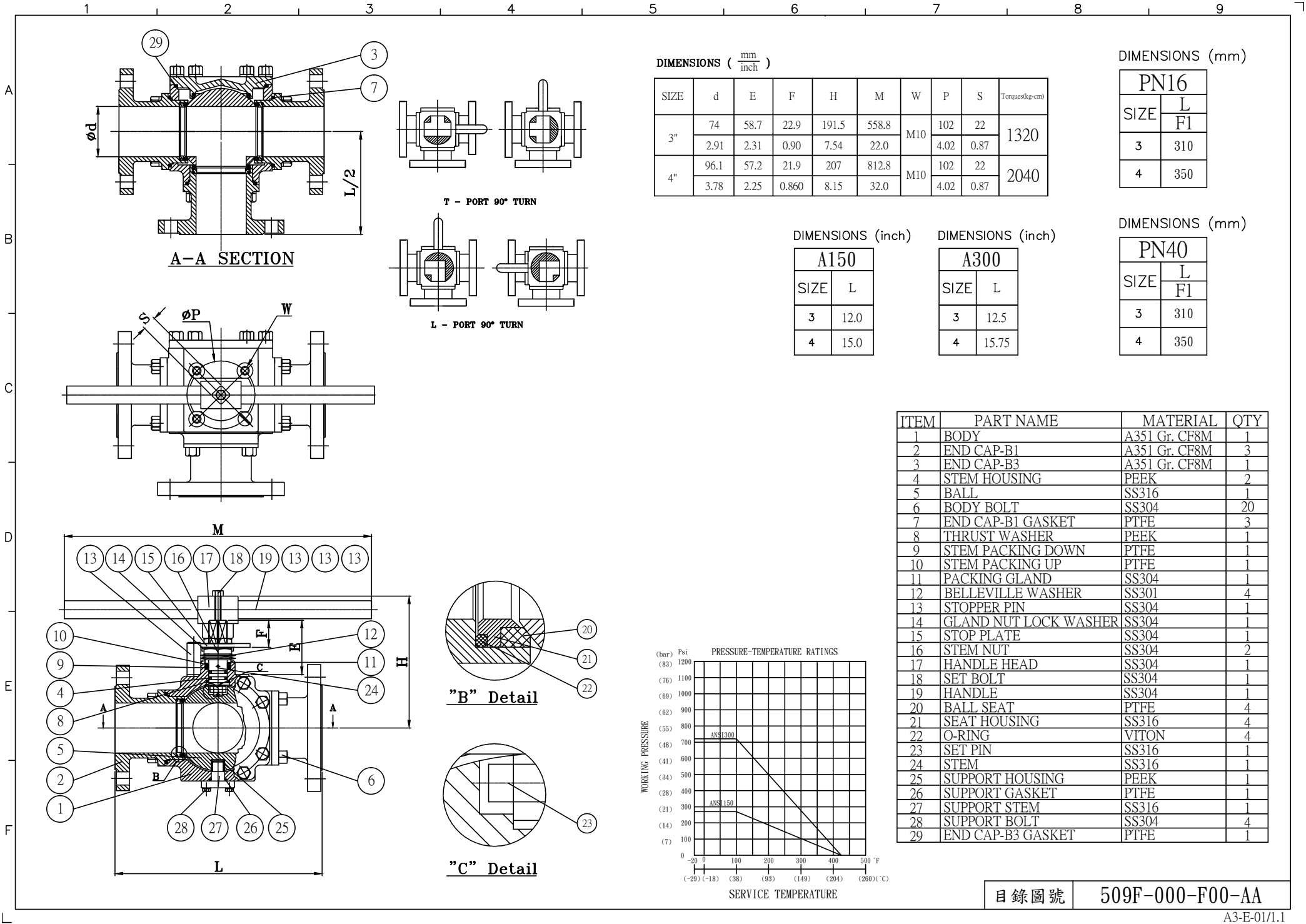


A-A SECTION



ITEM	PART NAME	MATERIAL	QTY
1	BODY	A351 Gr. CF8M	1
2	BALL	SS316	1
3	BALL SEAT	PTFE+15%CF	4
4	GASKET	PTFE	4
5	END CAP-B1	A351 Gr. CF8M	3
6	END CAP-B2	A351 Gr. CF8M	1
7	STEM	SS316	1
8	THRUST WASHER	PEEK	1
9	O-RING	VITON	1
10	STEM PACKING DOWN	PTFE	1
11	STEM PACKING UP	PTFE	1
12	PACKING GLAND	SS304	2
13	BELLEVILLE WASHER	SS304	4
14	GLAND NUT LOCK WASHER	SS304	1
15	STOP PLATE	SS304	1
16	STOPPER PIN	SS304	1
17	BODY BOLT	SS304	16
18	HANDLE NUT	SS304	1
19	HANDLE	SS304	1
20	HANDLE COVER	PLASTIC	1
21	BALL RETAINER PIN	SS316	1
22	SUPPORT HOUSING	PEEK	1
23	SUPPORT THRUST WASHER	PTFE	1
24	SUPPORT STEM	SS316	1
25	SUPPORT BOLT	SS304	3

目錄圖號 509F-000-F00-AA



DIMENSIONS (  $\frac{mm}{inch}$  )

SIZE	d	E	F	H	M	W	P	S	Torques(kg-cm)
3"	74	58.7	22.9	191.5	558.8	M10	102	22	1320
	2.91	2.31	0.90	7.54	22.0		4.02	0.87	
4"	96.1	57.2	21.9	207	812.8	M10	102	22	2040
	3.78	2.25	0.860	8.15	32.0		4.02	0.87	

DIMENSIONS (mm)

PN16	
SIZE	L
3	310
4	350

DIMENSIONS (inch)

A150	
SIZE	L
3	12.0
4	15.0

DIMENSIONS (inch)

A300	
SIZE	L
3	12.5
4	15.75

DIMENSIONS (mm)

PN40	
SIZE	L
3	310
4	350

ITEM	PART NAME	MATERIAL	QTY
1	BODY	A351 Gr. CF8M	1
2	END CAP-B1	A351 Gr. CF8M	3
3	END CAP-B3	A351 Gr. CF8M	1
4	STEM HOUSING	PEEK	2
5	BALL	SS316	1
6	BODY BOLT	SS304	20
7	END CAP-B1 GASKET	PTFE	3
8	THRUST WASHER	PEEK	1
9	STEM PACKING DOWN	PTFE	1
10	STEM PACKING UP	PTFE	1
11	PACKING GLAND	SS304	1
12	BELLEVILLE WASHER	SS301	4
13	STOPPER PIN	SS304	1
14	GLAND NUT LOCK WASHER	SS304	1
15	STOP PLATE	SS304	1
16	STEM NUT	SS304	2
17	HANDLE HEAD	SS304	1
18	SET BOLT	SS304	1
19	HANDLE	SS304	1
20	BALL SEAT	PTFE	4
21	SEAT HOUSING	SS316	4
22	O-RING	VITON	4
23	SET PIN	SS316	1
24	STEM	SS316	1
25	SUPPORT HOUSING	PEEK	1
26	SUPPORT GASKET	PTFE	1
27	SUPPORT STEM	SS316	1
28	SUPPORT BOLT	SS304	4
29	END CAP-B3 GASKET	PTFE	1

