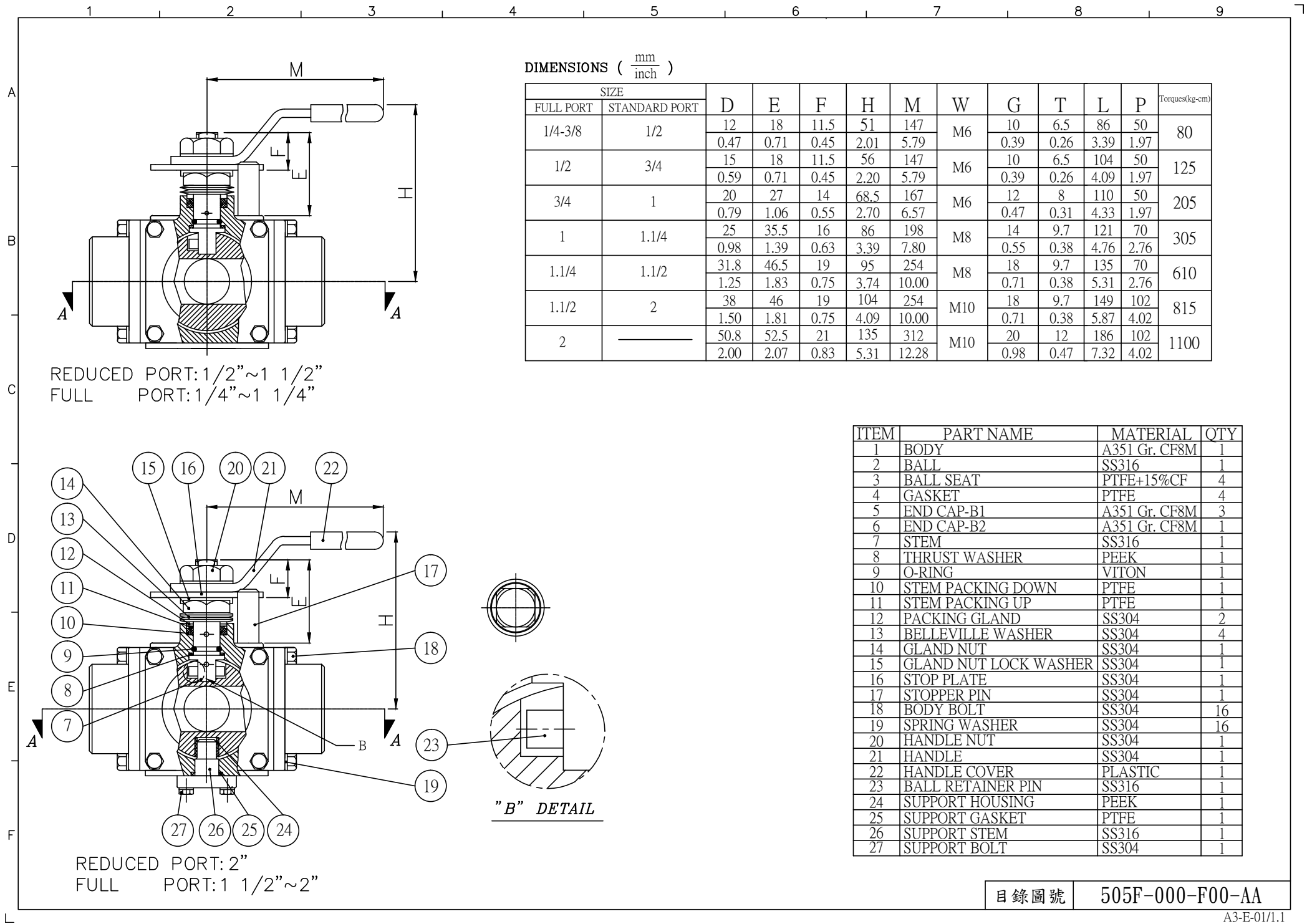


目錄圖號 505F-000-F00-AA



DIMENSIONS ($\frac{mm}{inch}$)

SIZE		D	E	F	H	M	W	G	T	L	P	Torques(kg-cm)
FULL PORT	STANDARD PORT											
1/4-3/8	1/2	12	18	11.5	51	147	M6	10	6.5	86	50	80
		0.47	0.71	0.45	2.01	5.79		0.39	0.26	3.39	1.97	
1/2	3/4	15	18	11.5	56	147	M6	10	6.5	104	50	125
		0.59	0.71	0.45	2.20	5.79		0.39	0.26	4.09	1.97	
3/4	1	20	27	14	68.5	167	M6	12	8	110	50	205
		0.79	1.06	0.55	2.70	6.57		0.47	0.31	4.33	1.97	
1	1.1/4	25	35.5	16	86	198	M8	14	9.7	121	70	305
		0.98	1.39	0.63	3.39	7.80		0.55	0.38	4.76	2.76	
1.1/4	1.1/2	31.8	46.5	19	95	254	M8	18	9.7	135	70	610
		1.25	1.83	0.75	3.74	10.00		0.71	0.38	5.31	2.76	
1.1/2	2	38	46	19	104	254	M10	18	9.7	149	102	815
		1.50	1.81	0.75	4.09	10.00		0.71	0.38	5.87	4.02	
2	---	50.8	52.5	21	135	312	M10	20	12	186	102	1100
		2.00	2.07	0.83	5.31	12.28		0.98	0.47	7.32	4.02	

REDUCED PORT: 1/2"~1 1/2"
 FULL PORT: 1/4"~1 1/4"

ITEM	PART NAME	MATERIAL	QTY
1	BODY	A351 Gr. CF8M	1
2	BALL	SS316	1
3	BALL SEAT	PTFE+15%CF	4
4	GASKET	PTFE	4
5	END CAP-B1	A351 Gr. CF8M	3
6	END CAP-B2	A351 Gr. CF8M	1
7	STEM	SS316	1
8	THRUST WASHER	PEEK	1
9	O-RING	VITON	1
10	STEM PACKING DOWN	PTFE	1
11	STEM PACKING UP	PTFE	1
12	PACKING GLAND	SS304	2
13	BELLEVILLE WASHER	SS304	4
14	GLAND NUT	SS304	1
15	GLAND NUT LOCK WASHER	SS304	1
16	STOP PLATE	SS304	1
17	STOPPER PIN	SS304	1
18	BODY BOLT	SS304	16
19	SPRING WASHER	SS304	16
20	HANDLE NUT	SS304	1
21	HANDLE	SS304	1
22	HANDLE COVER	PLASTIC	1
23	BALL RETAINER PIN	SS316	1
24	SUPPORT HOUSING	PEEK	1
25	SUPPORT GASKET	PTFE	1
26	SUPPORT STEM	SS316	1
27	SUPPORT BOLT	SS304	1

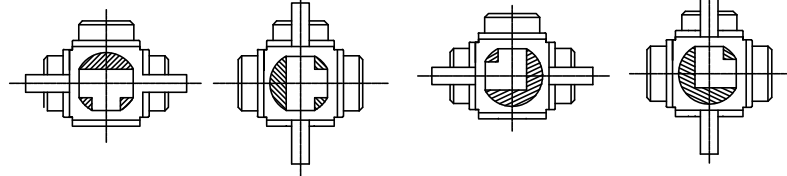
REDUCED PORT: 2"
 FULL PORT: 1 1/2"~2"

目錄圖號 505F-000-F00-AA

1 2 3 4 5 6 7 8 9

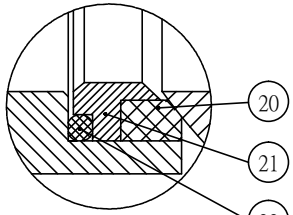
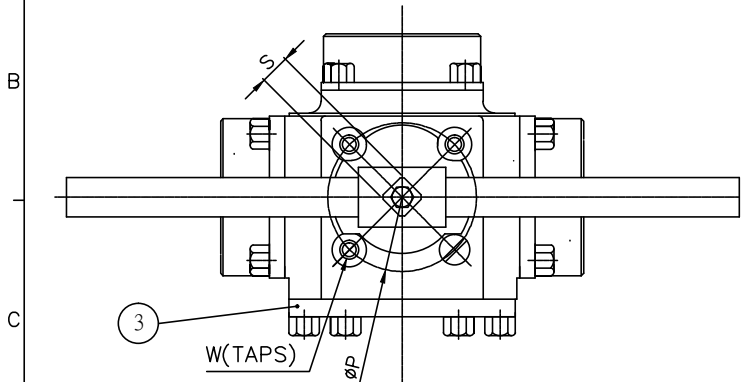
T - PORT 90° TURN

L - PORT 90° TURN

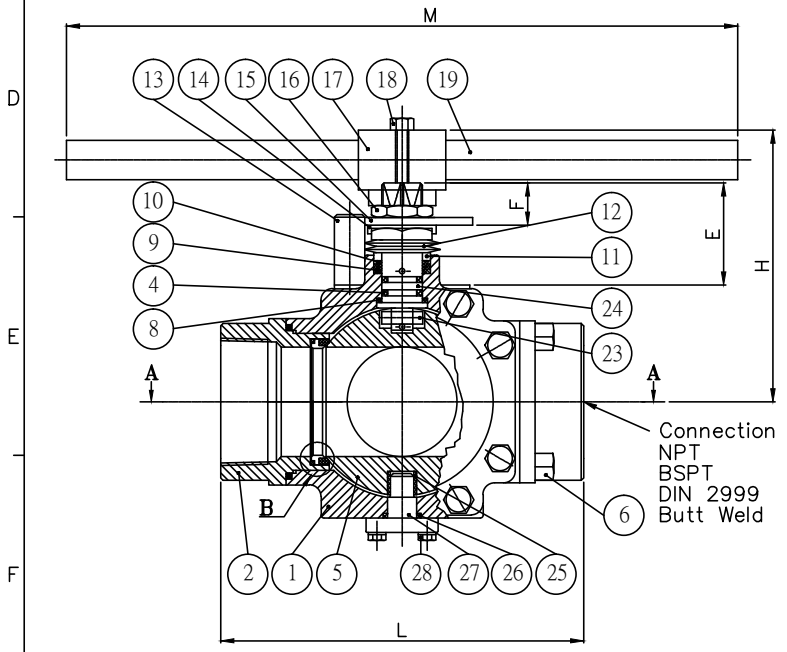


DIMENSIONS ($\frac{mm}{inch}$)

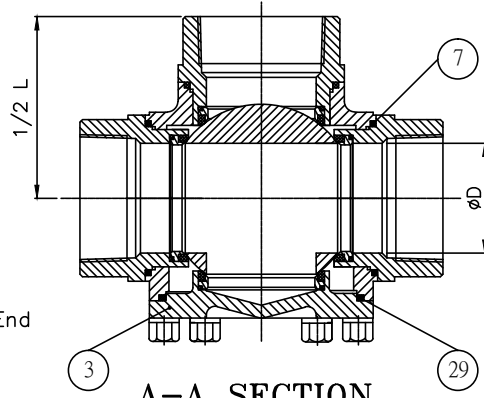
SIZE	D	E	F	H	M	L	W	P	S	Torques(kg-cm)
3"	74	58.7	22.9	191.5	558.8	246	M10	102	22	1320
	2.91	2.31	0.90	7.54	22.0	9.69		4.02	0.866	
4"	96.1	57.2	21.9	207	812.8	296	M10	102	22	2040
	3.78	2.25	0.860	8.15	32.0	11.65		4.02	0.866	



"B" Detail



Connection End
NPT
BSPT
DIN 2999
Butt Weld



A-A SECTION

ITEM	PART NAME	MATERIAL	QTY
1	BODY	A351 Gr. CF8M	1
2	END CAP-B1	A351 Gr. CF8M	3
3	END CAP-B3	A351 Gr. CF8M	1
4	STEM HOUSING	PEEK	2
5	BALL	SS316	1
6	BODY BOLT	SS304	20
7	END CAP-B1 GASKET	PTFE	3
8	THRUST WASHER	PEEK	1
9	STEM PACKING DOWN	PTFE	1
10	STEM PACKING UP	PTFE	1
11	PACKING GLAND	SS304	1
12	BELLEVILLE WASHER	SS301	4
13	STOPPER PIN	SS304	1
14	GLAND NUT LOCK WASHER	SS304	1
15	STOP PLATE	SS304	1
16	STEM NUT	SS304	2
17	HANDLE HEAD	SS304	1
18	SET BOLT	SS304	1
19	HANDLE	SS304	1
20	BALL SEAT	PTFE	4
21	SEAT HOUSING	SS316	4
22	O-RING	VITON	4
23	SET PIN	SS316	1
24	STEM	SS316	1
25	SUPPORT HOUSING	PEEK	1
26	SUPPORT GASKET	PTFE	1
27	SUPPORT STEM	SS316	1
28	SUPPORT BOLT	SS304	1
29	END CAP-B3 GASKET	PTFE	1

目錄圖號 505F-000-F00-AA