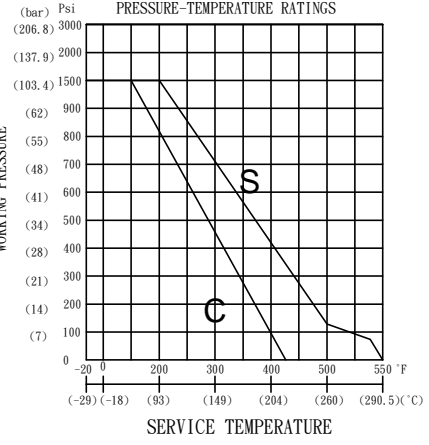
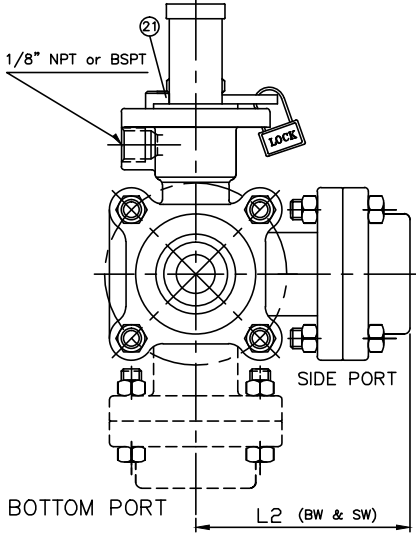
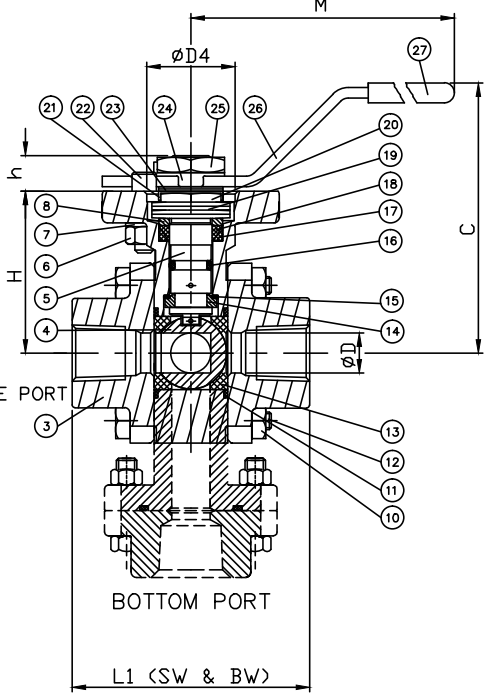
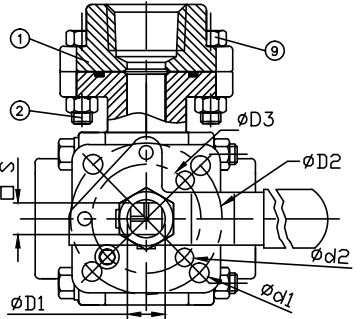


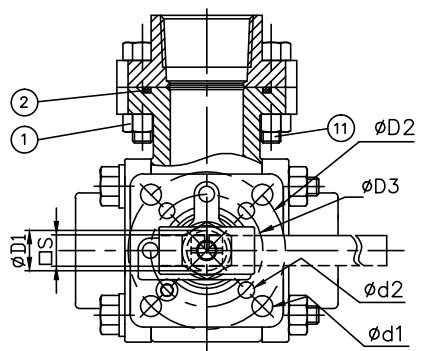
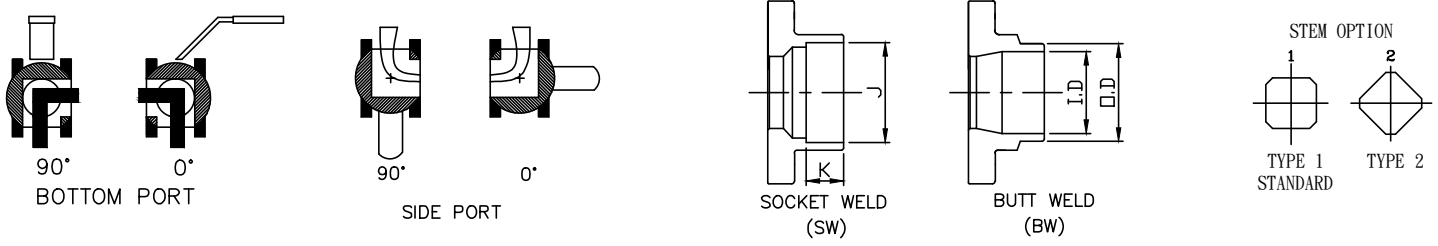
DIMENSIONS (mm)

364S	364F	Torques (kg-cm)	SW & BW THREAD														SW				BW			
			L1		L2		C	D	D1	D2	D3	D4	d1	d2	H	h	M	S	J	K	Sch40		Sch80	
			O.D.	I.D.	O.D.	I.D.	O.D.	I.D.	O.D.	I.D.	O.D.	I.D.	O.D.	I.D.	O.D.	I.D.	O.D.	I.D.	O.D.	I.D.	O.D.	I.D.	O.D.	I.D.
—	1/4"	60	63.3	63.3	2.49	2.49	71.1	11.2	12.0	50.0	36.0	25.0	6.0	6.0	45.7	12.9	135	9.0	21.7	11.2	13.72	9.25	13.72	7.67
—	1/2"	70	63.3	63.3	2.49	2.49	71.1	11.2	12.0	50.0	36.0	25.0	6.5	6.0	45.7	12.9	135	9.0	21.7	11.2	17.15	12.52	17.15	10.74
—	3/4"	80	68.2	68.2	2.69	2.69	74.0	14.3	12.0	50.0	36.0	25.0	6.5	6.0	48.0	12.9	160	9.0	27.1	14.2	21.34	15.80	21.34	13.87
—	1"	160	87.0	87.0	3.43	3.43	75.6	20.6	14.0	50.0	42.0	30.0	7.0	6.0	50.6	11.8	160	11.0	33.8	18.3	26.67	20.93	26.67	18.85
—	1 1/4"	240	98.6	98.6	3.88	3.88	80.6	25.4	14.0	50.0	42.0	30.0	7.0	6.0	55.6	12.1	160	11.0	42.5	18.3	33.40	26.64	33.40	24.31
—	1 1/2"	460	111.4	111.4	4.39	4.39	95.0	31.8	18.0	70.0	50.0	35.0	9.0	7.0	65.0	16.6	202	14.0	48.6	18.3	42.16	35.05	42.16	32.46
—	2"	1020	122.6	122.6	4.83	4.83	102	38.1	18.0	70.0	50.0	35.0	9.0	7.0	72.0	16.6	280	14.0	61.1	21.3	48.26	40.89	48.26	38.10



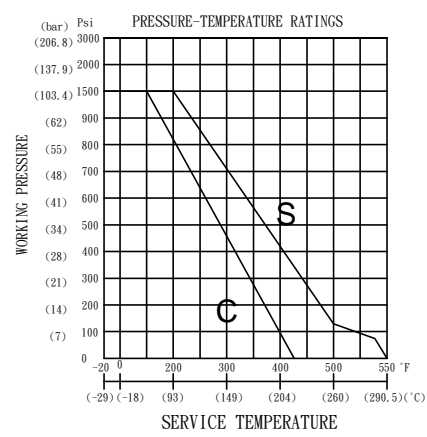
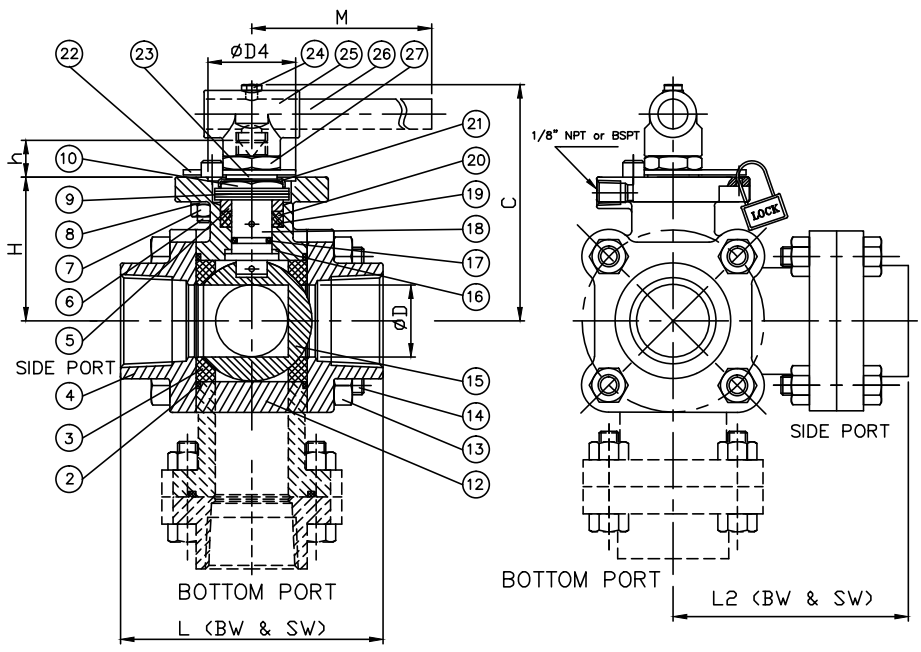
ITEM	PART NAME	MATERIAL	QTY
1	BODY	A351 Gr. CF8M	1
2	PORT BOLTS	SS304	2
3	END CAPS	A351 Gr. CF8M	3
4	BALL	SS316	1
5	STEM	SS316	1
6	STOPPER PIN NUT	SS304	1
7	SPRING WASHER	SS304	1
8	PACKING GLAND	SS304	1
9	END BOLT	SS304	4
10	BODY NUTS	SS304	8
11	GASKETS	PTFE	3
12	BODY BOLTS	SS304	4
13	BALL SEATS	PTFE+15%CF	2
14	SPILT RING	SS316	1
15	THRUST WASHER	PEEK	1
16	O-RING	VITON	1
17	STEM PACKING DOWN	PTFE	1
18	STEM PACKING UP	PTFE	1
19	BELLEVILLE WASHER	SS301	4
20	GLAND NUT	SS304	1
21	GLAND NUT LOCK WASHER	SS304	1
22	STOP PIN	SS304	1
23	STEM SPACER	SS304	1
24	STOP PLATE	SS304	1
25	HANDLE NUT	PLASTIC	1
26	HANDLE	SS304	1
27	HANDLE COVER	PLASTIC	1

A  
B  
C  
D  
E  
F



DIMENSIONS (mm/inch)

364S	364F	Torques (kg-cm)	SW & BW THREAD		C	D	D1	D2	D3	D4	d1	d2	H	h	M	S	SW				BW			
			L1	L2													J	K	Sch40		Sch80			
																			O.D.	I.D.	O.D.	I.D.		
2 1/2"	2"	1020	145.15	145.15	119	50.8	22.0	102	70.0	55.0	11.3	9.0	89.0	20.8	320	17.0	73.7	29.7	60.33	52.50	60.33	49.25		
			5.71	5.71	4.69	2.00	0.87	4.02	2.76	2.17	0.44	0.35	3.50	0.79	12.6	0.67	2.90	1.14	2.38	2.07	2.38	1.94		



S=Carbon Filled Seats  
C=Reinforced Teflon Seats

ITEM	PART NAME	MATERIAL	QTY
1	END BLOTS	SS304	4
2	GASKETS	PTFE	3
3	BALL SEATS	PTFE	2
4	END CAPS	A351 Gr. CF3M	3
5	PACKING GLAND	SS304	1
6	STOPPER PING BOLT	SS304	1
7	STOPPER PING NUT	SS304	1
8	SPRING WASHER	SS304	1
9	BELLEVILLE WASHERS	SS301	4
10	GLAND NUT	SS304	1
11	PORT BOLTS	SS304	2
12	BODY	A351 Gr. CF3M	1
13	BODY NUTS	SS304	8
14	BODY BOLTS	SS304	4
15	BALL	SS316L	1
16	THRUST WASHER	PEEK	1
17	O-RING	VITON	1
18	STEM	SS316L	1
19	STEM PACKING DOWN	PTFE	1
20	STEM PACKING UP	PTFE	1
21	GLAND NUT LOCK WASHER	SS304	1
22	STOP PLATE	SS304	1
23	STEM SPACE	SS304	1
24	RETAINING BOLT	SS304	1
25	HANDLE HEAD	CF8	1
26	HANDLE	SS304	1
27	HANDLE NUT	SS304	1

目錄圖號 364F-000-F00-AA